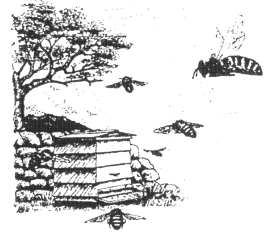




The Daily Worker

• Edition 7 July 2010

Web site: www.holsworthybeekeepers.org.uk



All Change.....

Welcome to this bumper issue of the Branch newsletter, The Daily Worker. Branch life is very busy at the moment and there are lots to tell you about. Please take a few moments to 'read all about it'.....

Members will have by now received this month's copy of the DBKA magazine. (If you are a registered member and you have not received your magazine, let our Chairman know!) These will no longer be sent out by the Branch, but are now mailed directly from the printers. So the opportunity has been taken to conduct a review to streamline our own whole distribution process and achieve financial benefits.

In future, the Branch newsletter will be circulated electronically, unless individual members opt out and wish to receive a hard copy. Those members who we know are unable to access the Internet will automatically be sent the newsletter through the post.

This is also an ideal time to thank Jill White who has worked so hard on behalf of the Branch for many years, but recently as our magazine distributor.



Nosema Day (1)

On 24th April, the branch held its second Nosema day. Whilst the event was poorly attended, 70 + samples were examined and the results played an important part of the county survey. On this occasion the NBU software was used (thanks to Graham Jones' computer skills) so the results could be collated and used along with the results from the two DBKA Nosema days.

60% of the samples showed Nosema infection. Despite the poor attendance of members bringing samples, there was a good turn out of technicians and microscopists who gave up their day to help. It was an opportunity for everyone present to see the whole process and view Nosema under a microscope. Overall it was a very worthwhile exercise.

It has been noted that the DBKA diagnosis days are moving to the autumn to facilitate treatment, and it is considered appropriate that the Branch should do the same.

It is advised that all those members who had some trace of infection at the April inspection should have all their colonies checked again so that bees can be treated before they go into winter.

Nosema Day (2)

Saturday 11th September at the Stables, Chilsworthy.

Samples of bees to be delivered between 10 and 11am.

Up to 6 samples per branch member will be free, above that £1 per sample. If members will not be able to deliver their samples on that morning, contact Anne Binns and she will try and suggest an alternative means of delivery.

Please read instructions on how to sample bees at [Nosema testing and diagnosis](#) on the Branch website.

Helpers Needed: This is an ideal **Learning Opportunity**. Both technical and administrative help is required, but no experience necessary.

Contact Anne for further information and offers of help.

Email j.binns990@btinternet.com

Phone 01409 261381



Basic Beekeeping Assessment

Anne Binns, our Education Officer, is compiling the list of members who would like to take their basic assessment this year. If you are a relatively new beekeeper, you have to meet the BBKA criteria of having kept bees for one season and having completed a beekeeping course. The assessment is an informal, friendly practical session and chat. This is also an opportunity for experienced beekeepers the basic certificate. This certificate is the pre requisite for all other BBKA assessments. If you are interested please can you contact Anne Binns on 01409 261381.



Ruby Run

Congratulations to Anne Binns who completed the Ruby Run in 2 hours 13 minutes. She asks that all those members who sponsored her please pay her as soon as convenient.

Ann is hoping to have raised about £150 for the Apiary fund. Of course if you haven't sponsored her you still could!

Her time was 10 minutes faster than last year. Perhaps she will now be setting her sights on the Olympics in 2012!



Branch Apiary - A Partnership with the National Trust

As reported in the last issue of 'The Daily Worker', the Branch has been offered a new home for our teaching apiary by the National Trust at Dunsland House. That offer has now progressed to the administrative stage with a draft document, called a Bee Licence by the Trust, currently under review by the Branch committee. We have taken the prudent course of seeking legal advice and we are delighted that this has

been provided by Peter, Peter, & Wright of Holsworthy absolutely free of charge.

The Trust has offered the Branch accommodation in the old coach house for storage, workshop, and meeting place. A paddock will provide more than adequate space for the hives. And we will have on site parking. All this for just a £1 a year for the first two years!

But we should not underestimate the size of this venture. A lot of work, and of course money, will be needed to ensure the Branch members fully benefit. So watch this space.....

If any member wants further information, please contact our Chairman, Christopher Smith (Tel 01409 254457 or email christophersmith.270@gmail.com)

Stop Press!

The negotiations are now complete; the Bee Licence is now ready for both the National Trust and the Branch to sign.

The Branch Committee are keen to show off the site to members and we aim to hold a 'bring & share' picnic at our new apiary on Sunday, 19th September.



A British Queen?

New Branch Policy

New Branch policy on the importation of queen bees has just been agreed.

The debate regarding importation rages on. Members may well recall the lively discussions last Autumn when, as part of our Winter Programme, Adam Ververs our Regional Bee Inspector presented the advantages and the disadvantages of using imported queens. Of course, there is nothing new in bringing in queens from abroad, just remember the activities of Brother Adam.

But perhaps times are different. One of the current risks relates to the apparently increasing number of exotic pests waiting on the continent to come to the U.K. Just one of these is the small hive beetle (*Aethina tumida*) which has now been

found in Hawaii. This beetle is a serious pest of honeybees. It can multiply to huge numbers within infested colonies where it eats brood and destroys combs and can ultimately destroy a colony. Hawaii is one of only a few countries outside the EU from which imports of queen bees are allowed to enter the E.U.; in fact 570 queens have already been imported into the U.K. this year. The situation is under review and potentially imports of bees from Hawaii will no longer be allowed to enter the UK or other E.U. member states.

Interestingly, thanks to 1987 legislation banning the importation of foreign bees into the Isle of Man, the Manx bee population appears to be free of all known diseases. All colonies on the island are currently being checked for varroa and it is widely expected that they will be given a clean bill of health. The Isle of Man will then apply for special status as a Varroa-free zone, which has so far only been awarded to Australia, parts of the Scottish Highlands and some of the Outer Hebridean islands. However, amongst the advantages of importing queens is the availability of good laying queens early in the season and their addition to the genetic pool should not be ignored.

Nevertheless, it is against this backdrop that the Branch Committee determined that, as a matter of policy, imported queen bees will not knowingly be used at the Branch Teaching Apiary.



Success for Holsworthy Beekeepers at Devon County Show

What a year for our members! Both as individuals and as a branch of Devon Beekeepers Association, they excelled at the recent Devon County Show.

Master minded and coordinated by our Events Secretary, Anne Bentham, the Branch stand was based on the theme of 'Honey Bees in Human History' and reflected on the relationship between the honeybee and man since the beginning of time. Such a complex display was only possible because of a great team effort involving

members, families and friends. Thanks should also go to those members who gave up their time to steward at the Show, either on the Branch stand or for DBKA.

But the effort was worth it and our display certainly impressed the judges, Holsworthy were awarded the Stevenson Trophy, for the best Branch display, for the second time in three years! Our competition, for a £10 book token, tested children's understanding of information contained in their exhibit. The winner was Alice Lovell, aged nine, from Kingkerswell, Newton Abbott.

As individuals, Pete McCabe won the Alstone Cup for his outstanding heather honey in the gift class and our chairman, Christopher Smith, won the Langdon Cup for the highest overall marks in the waxcraft classes. Other Branch beekeepers achieving success were Andrew Sluggett, Robert and Anne Bentham, Ruth Neal, and Elaine Smith. Of the thirty-eight classes at the show for individual beekeepers, Holsworthy Branch beekeepers gained places, including a number of 'firsts', in over half.

In addition to finding time to enter the show, Ruth Neal also chairs the group that plans the whole Bees and Honey feature at Devon County Show. In this her first year in the role, the section won a gold medal and received the prestigious accolade of Reserve Champion, Trade stand.



Brother Adam moves to Holsworthy

Several Holsworthy Beekeepers were privileged to receive some of the old modified Dadant hives originally build by Brother Adam complete with the Buckfast bees.

Members gathered at the apiary at Buckfast and, with the help of the assistant beekeeper Claire Densley, were assigned hives to take away. The whole exercise was completed by 2am. Then we all had the tricky job of transferring our Buckfast bees to our own hives with the exception

of Ian Westaway whose Langstroth hives neatly accommodated the dadant frames. For Pete McCabe no problems for him he will run the Dadants having cleaned out the Buckfast shed of surplus supers. Linda Davis and George Travis carefully placed their Dadant under their Commercial equipment, blocking off the spaces with wood and awaiting the brood to hatch - ensuring no losses. Sophie and Wim Peers shook their bees into their WBC. All report that the bees have settled well and are exceptionally gentle to handle.

It has all been very exciting for the new beekeepers, Ian, Sophie and Wim who are grateful to Pete McCabe and Fred Sillifant who are providing that extra bit of tutoring. Isn't it great to be part of a club that readily gives advice and support to other members. Everyone also thanks Claire and Brother Adam.



Holsworthy & Stratton Show

It seems only a moment ago that we were asking members to volunteer for stewarding at Devon County Show. And now we're asking for more volunteers, this time for stewarding at the Holsworthy & Stratton Show which takes place on Thursday 26th August.

We need a total of eight stewards to cover all the activities planned on our Branch stand. Each volunteer will be asked to cover either the morning or afternoon session, in return you will be given a show pass and the rest of the day to enjoy the show.

If you are able to support the Branch in this way, please contact Graham Jones, tel 01288 361147. There is also an opportunity for members to sell honey and/or hive products at the Show. For more information, you can contact our chairman, Christopher Smith on tel. 01409 254457.

It really is a good day out and a chance to talk lots about beekeeping.....

Dates for Your Diary

Sunday 18th July. 2.30pm: Apiary Meeting.

Sunday 1st August 2.30pm: Apiary Meeting.

Sunday 8th August 2pm: Farm Walk and cream Teas at Trelay Farm, St. Gennys. Further details on the Branch website.

Thursday, 26th August: Holsworthy & Stratton Show

Saturday, 11th September: Nosema Diagnosis Day
Further details on the Branch website.

Saturday, 23rd October: Branch Honey Show



Devon Food and Drink Event

Holsworthy Beekeepers will have a stall at the Devon Food and Drink event in cooperation with Ruby Country on the 2nd September between 10:30 and 3:30 - this is the tail end of summer and promises to be not only a fun day but there will be lots of yummy foods to try and buy. You are invited to sell your honey on the stall...we need 2 volunteers to set up the stall, sell members items, and talk interested folk through the virtual hive. There will be another 25 stalls in marquees and a luncheon marquee. A massive advertising campaign is already underway. If you want to help/sell honey - email Linda at info@west-lake.co.uk Otherwise just come along.

Farmers Market Stall

On October 2nd, there will be a Farmers Market in Black Torrington Village Hall. Would any of our members like to take on a stall selling honey, or any other bee related products? £5 per table.

If you would be interested contact David Arney on 01409221434 by the end of July.



Thought for the Month

When you shoot an arrow of truth, dip its point in honey.

(Arab Proverb)

