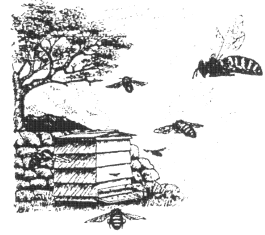




The Daily Worker

• Edition 9 December 2010

Web site: www.holsworthybeekeepers.org.uk



STOP PRESS

We are **URGENTLY** in need of a **Branch Treasurer**. **Diana Stevens** has resigned at short notice and we are seriously vulnerable without this very important member of the Committee. Can you help? Please contact **Ruth Neal** on **01805-601715**.

A note from our new Chairman

I was delighted and honoured to be elected Chairman of Holsworthy Branch at the AGM on 8th November following the mandatory resignation of Christopher Smith as he had served 3 years as Chairman. Chris has served the Branch in an exemplary manner. He has generated enthusiasm, good beekeeping practice, and a vision for the future of the Branch by masterminding the acquisition of the Dunsland House National Trust site for our new apiary. We will not lose all his skills as he has agreed to be, and has been appointed by the Branch Committee, the Dunsland House Project Manager; working in conjunction with Andrew Sluggett as the Apiary Manager.

At the AGM, Anne Bentham proposed a vote of thanks to Chris for his outstanding chairmanship and I endorse her words wholeheartedly. Chris will be a very big act to follow, but with your support, advice and help I will give it my best efforts.

Ruth Neal
Chairman



And a note from our new Secretary

Thank you to everyone who supported my nomination as secretary at the AGM. I had been hoping to join the committee but it was quite a shock to find myself as the new secretary. I will certainly give it my best shot and try to justify the confidence you have shown in me. My wife and I are relatively new beekeepers but we are very enthusiastic and we have learned an enormous amount from those experienced beekeepers who have given up their time to teach at the apiary and at the beginners' classes.

My background is scientific in that my day job is working as a veterinary surgeon for a practice in Plymouth. Since receiving my bus pass this year I have reduced my working time to two days a week but all that potential free time seems to have been soaked up by other demands including the bees and keeping an old house in one piece. I have some previous experience of committees having been a parent governor of Bude Infants School and a Trustee of

the PDSA pension scheme where we were responsible for some very scary eight digit numbers!

My other interests include photography, electronics and renovating old electric guitars. Recently I have become very interested in microscopy in relation to beekeeping and I hope to do the BBKA module in this subject once I have the basic beekeeping exam under my belt. These are exciting times for the Holsworthy Beekeepers. With our fast growing membership we have the chance to all pull together and make this the most go-ahead branch in the county, if not the South West.

Wishing you all a Happy Christmas and New Year.

Reg Godwin
Secretary



Apiary Development

And we're off.....

Last Saturday, 27th November, saw the very first work on our new Branch Apiary at Dunsland House. A joint working party comprising National Trust Rangers and around a dozen Branch members laboured in temperatures hovering around zero. Whilst not under estimating all the work that still needs to be done to turn the site into a working apiary, all those who contributed their labour should be proud of the progress made. A magnificent effort!

Amongst jobs completed were the clearing of a footpath link from the coach house to the paddock where the apiary will be situated. This included a culvert and steps. Pedestrian and field gates were installed, together with a considerable number of fencing posts. The National Trust has undertaken to complete any outstanding fencing work.

A wonderful sense of fun prevailed throughout the day.

This was heightened by a truly fantastic barbeque, masterminded by Apiary Manager Andrew Sluggett, and catered ably provided by Anne and John Binns who supplied the food including sausages from their home reared pigs. Further working parties will be organised for the New Year when there will be opportunities for more members to become involved.



Holsworthy Branch Honey Show

The Annual Branch Honey Show took place on 23rd October at the Bodmin Street Methodist Church Hall in Holsworthy. Members entered 80 exhibits in 15 of the 16 classes and the judge, Kay Thomas, was very pleased with the overall standard. The children's exhibits of a bee-related painting and a 'bee on a stick' were the focal point of the hall receiving praise from judge Norma Brookhouse. In spite of a very wet day with hail and thunder, we enjoyed a steady trickle of the public who greatly appreciated the 'Taste of Honey' table, and were able to indulge their need for honey at the Sales Stall. Candle rolling and the jigsaw were a draw for the children. The Mayor of Holsworthy, Councillor R Brown, did the honours by opening the Show and presenting the prizes later. He also had some very encouraging words to say about the relevance of bee-keeping in general, and around Holsworthy in particular.

The trophy winners' awards caused some amusement as Mo Hodgson won both the Thorne Perpetual Novices Cup and the Penfound Cup (small), never before having entered any competition in her life. She was thrilled to bits. Geoff Heal won the large Penfound Cup, and Elaine Smith triumphed with the Moss Cup and the Stanley Rowland Perpetual Cup for Best in Show. Sadly, a Blue Ribbon could not be awarded as we missed the required target of 100 entries.

Ruth Neal



Spring Convention 2011 - Book Your Place Now!

Now in its sixth year, the Holsworthy Branch Spring Convention 2011 promises its best ever programme. Our Regional Bee Inspector will be reviewing Varroa treatments, both authorised and not. If you're looking for an alternative way of challenging Varroa, listen closely to Ron Hoskins' account of the Swindon Hygienic Bee. This is complimented by Jo Widdicombe's work on the Cornish Black Bee Project.

If you feel the urge to commit the perfect crime, keep in mind the work of Professor Michael Keith-Lucas which focuses on the uses of pollen in crime detection, and Mathilde Briens' sniffer bees which are likely to detect all those unlawful substances that you might carry. So spend a good day with fellow beekeepers, enjoy a delightful lunch and stock up on beekeeping supplies at keen prices from our trade stands: Bitz4Bees, and Modern Beekeeping. Perhaps you're looking for something special, so why not take a look at 'This bee art' - original bee related artwork.

There will also be the usual light hearted quiz and prize draw, with prizes that include vouchers for Bitz4Bees. To book your place at the special Holsworthy Branch member price of £10, telephone our Registration Secretary, Roy Houghton on 01409 250230 or email r.houghton07@btinternet.com



Beginners' Course

Just a reminder to all of you who have enrolled on the 2011 course, that the first session will be on 17th January at The Stables. Course fees need to be paid before this date so if you have not already paid then please can you send a cheque made payable to 'DBKA Holsworthy Branch' to Anne Binns



Dates for Your Diary

Monday 13th December 7.30pm The Stables, Chilsworthy; 'Dunsland House, Past, Present & Future'

A series of short illustrated talks on our new apiary site & Christmas Social. Maurice Thomas a local historian will present a short film on how Dunsland house looked before fire destroyed this National Trust property. This is our festive meeting and so after the talk we shall be having a Christmas bring and share social. Please bring a plate with suitable food. Guests, at a charge of £2 each, are welcome. Some extra Christmas nibbles will be made by the committee. More information from entertainments@holsworthybeekeepers.org.uk

Monday January 10th. Monthly Meeting at The Stables.

A week at the Central Laboratories of the National Bee Unit. A talk by Anne Binns.

Saturday 27th February. Spring Convention.

See full details within the Newsletter.



Wanted

1. Back issues of BeeCraft magazine between 2000 and the end of 2006. Would prefer full years but anything less considered. Offering £15 per full year or £1 per individual issue and can collect. Contact Reg and Sue Godwin 01288-381379 evenings or e-mail reg@freeola.com
2. WBC whole hives or parts in reasonable condition. Also looking for deep National brood boxes 14 x 12. Contact Reg and Sue Godwin 01288-381379 evenings or e-mail reg@freeola.com



The Daily Worker

Since the first edition of The Daily Worker in January 2009 this newsletter has been published quarterly. For the next six months, on a trial basis, we will be doing it every other month. This should help to keep all the articles a little more up to date. If you have articles you wish to put forward then email or post them to the editor. The For Sale and Wanted section may be of interest to members.

Dave Arney, Editor - dja@davidarney.plus.com