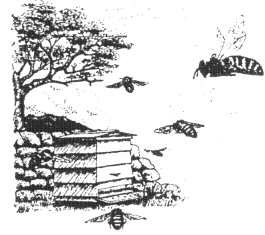


The Daily Worker

• Edition 13 December 2011

Web site: www.holsworthybeekeepers.org.uk



Annual General Meeting

At the AGM on 14th November the Officers for the coming year were elected as follows;

Chairman Andrew Sluggett

Secretary Eunice Goodwin

Treasurer Anne Binns

Social Secretary Linda Davis

Education Officer Anne Binns

Membership Secretary & Webmaster Graham Jones

Other Committee Members Brian Dixon, John Duncan, & Christopher Smith.

Thanks were expressed to Ruth Neal for her work as Chairman for the past year, and to Reg Godwin, who had carried on the roles as Secretary and Treasurer.

Accounts. The accounts presented at the AGM showed a surplus of £1703 income over expenditure for the past year.

Auction. The auction which was run by George Travis made £325-50 of which £213-50 was returned to club funds due to the generosity of the members who offered items for the auction.



Honey Show

The Honey Show has been re-scheduled to our regular winter meeting on **Monday 9 January 2012** at The Stables, Chilsworthy Methodist Chapel. There will be 'open judging'; this will enable us all to listen in to the judge's comments on the exhibits – an excellent opportunity to pick up some useful tips on successful showing.

The timing of last date for entries and staging etc. has not been finalised yet but judging will start at 7.30 pm.

The schedule and rules are available on the [Honey Show](#) page on the branch website. The entry form and finalised timings will be available very soon.

Do enter this show and come along on the evening – this is an excellent opportunity to learn a great deal about the techniques of showing.



Spring Convention 2012 - Book Your Place Now!

It surely cannot be that time again already, but it is! 2012 marks the seventh year of the Holsworthy Branch Spring Convention. Last year's programme will take some beating we will continue to aim high. Already, by popular request, we have secured a return visit from Professor Michael Keith-Lucas who will continue to explore the use of pollen identification in forensic science.

Adam Vevers, our Regional Bee Inspector, will again provide an overview of developments in the world of beekeeping, including the potential threat from the Asian Hornet. More details of other speakers to follow.

Make sure you note the date – **Saturday 25th February** – in that diary you'll receive for Christmas and spend a good day with fellow beekeepers. We hope you will enjoy our delightful lunch and stock up on beekeeping supplies at keen prices from our trade stands. Already confirmed are Bitz4Bees, and Modern Beekeeping who are under new ownership. They are quite happy to bring along any advance orders to avoid carriage costs, so visit their website. We also aim to hold our usual light hearted quiz and prize draw, with prizes that include vouchers for Bitz4Bees. We have done our best to hold down costs, so you can book your ticket at the same special Holsworthy Branch price as last year of £10. Just telephone our Registration Secretary, Roy Houghton on 01409 250230 or email r.houghton07@btinternet.com
Christopher Smith



Exceptional Weather!

As I sit writing this my bees are still flying and bringing in pollen and it is 27th November. Can any of our longstanding beekeepers remember a season extending this late? What are the implications for overwintering?

It is clear that brood is still present and in the absence of any significant frosts, the bees are not yet clustering.

Most of us will have fed syrup much later than usual because the bees seemed to be still using it for their immediate energy needs as well as storing it.

Recognising the risk of uncapped syrup fermenting in cells, I changed to fondant at the beginning of November. This wouldn't normally be needed until late winter turning into early spring when stores are running low.

My concern is that the mild weather has allowed exceptionally large colonies of active winter bees to build up and if these consume all the stores there will be a serious problem by the end of winter and we could be risking starvation in early spring. They are certainly consuming the fondant already in spite of having had a huge amount of syrup during September and October. If we ensure that our bees don't starve in early spring we should have some very large colonies to start us off next year and that could mean early swarming. The extended brood rearing season also means Varroa problems and for me that will mean treating with Oxalic Acid around Christmas time if the weather is cold enough for the bees to be clustered and without brood.

Reg Godwin



Sweet Notes

I have recently been given a number of old bee books and publications, one of which contained an extra item of interest.

The publication concerned was the Ministry of Agriculture and Fisheries 'Bulletin no. 9 – Beekeeping' published by His Majesty's Stationery Office in 1937, price 1s 0d Tucked inside was a letter written just after World War II, part of which reads as follows:

'We shall be pleased to see you the Sunday before Easter. Let us hope the weather has improved by then..... So Kathie has got her bees at last. It is time now to give them their Spring feed of sugar. You can get a permit from the Food Office for 5lbs per hive, and feed them a syrup of equal weights of sugar and water. This is 1 ¼ lbs of sugar to 1 pint of water, heated until all is melted. If you do this, you will have a strong lot of bees on the wing for the fruit blossom, and if the weather is good they will bring in a lot of honey!'

The last page of the letter is missing, so the author of the letter is unknown, but I found its contents historically interesting. Hope you do as well.

Christopher Smith



Sale Of Apiary Shed

The shed at the old branch apiary is for sale. It is 10 x 8 ft and is approximately 10 years old and has been treated every year since new. The committee have decided that the sale should be by sealed bids from branch members and that there should be a reserve of £250.

The bids should either be brought along to the next branch winter meeting on Monday 12 December or sent to Linda Davis at West Lake Farm, Chilla, Beaworthy, EX21 5XF, tel 01409 221 991 email info@west-lake.co.uk . The bids

will be opened at the end of the meeting.

The dismantling and removal of the shed will be the responsibility of the winning bidder and because we have to vacate the site the shed will need to be removed as soon as possible.

Some photos of the shed are on the website, or it can be viewed at the old apiary at Hollacombe, near Holsworthy, For further details contact the branch chairman, Andrew Sluggett, tel 01409 241563 email andykimsluggett@btinternet.com



Christmas social and 'Bringing back the beaver' Monday 12 December

Leading local naturalist Derek Gow will give an illustrated talk on his work on the re-introduction into the UK of the beaver. This is a great opportunity to listen to one of this country's leading conservationists. As well as beavers, Derek is an authority on the breeding and reintroduction of the water vole. Do not miss the opportunity to listen to this talented speaker.

The meeting is at 7.30 pm on Monday 12 December 2011 at our usual winter meeting place, The Stables, Chilsworthy Methodist Chapel.

As has become traditional, this December meeting will be followed by our **Christmas social** bring and share. There will be hot Mulled Cider and Hot Mulled Apple Juice for the drivers along with some special nibbles from the committee.

All are welcome. Bring a plate.



Membership renewals for 2012

Membership subscriptions for 2012 for DBKA and the Holsworthy branch are now due. We are repeating last year's system of producing partially completed renewal forms for all existing members (and those who have expressed an interest in joining in 2012).

All members with an email address should have received their own renewal form; this will have their personal details already completed. All you will need to do is check them, complete the category of membership required sign the form and return it, together with a cheque for the subscription to the Membership Secretary – instructions are on the form. If you have not yet received your form please contact Graham Jones (01288 361147) or at info@holsworthybeekeepers.org.uk

DBKA will again be operating the rule that if the subscription is not paid by the end of February 2012 their membership will lapse.



Beginners' course 2012

The branch will again be organising a 10 week course for those who are just starting beekeeping. It starts on Monday 16 January 2012 and full details can be found at [Beginners' Course 2012](#) on the website or contact Anne Binns on 01409 261381.